



SAFETY PRECAUTIONS

Falling or colliding

If the product falls or is damaged by strong impact, it will be in danger of causing fire and electric shock. In case of the above situation, the following operations shall be performed immediately:

1. Turn off the power supply.
2. If you are using a power cord for power supply, you need to unplug it from the wall outlet.
3. Contact your distributor.



Plastic bag

Do not let anyone put plastic bags for this product on his head or in his mouth. Otherwise, there is a risk of asphyxia. Families with young children should pay special attention to it.



Keep a distance from the product and the bracket

Climbing the bracket is dangerous of overturning or damage. Families with young children should pay special attention to it.



Put

Avoid placing the product on an uneven surface or any other unstable place. Otherwise, it will cause the product to fall down, which will lead to the risk of injury.



Product Mobility

Before moving this product, you must unplug the power cord plug from the wall outlet and pull out all other cables and connecting wires. Otherwise, it will lead to damage of power or connection wires, resulting in fire and electric shock.



clean

Before cleaning this product, you must unplug the power cord plug from the wall outlet, otherwise there is a risk of fire and electric shock.



Jack

The socket of this product can only be connected to the designated equipment and devices. Connecting non-designated equipment or devices is dangerous of causing fire and electric shock.



Location selection

It should be avoided to place the product in the following places, otherwise there is a risk of fire and electric shock.

- High temperature or dusty places.
- Kitchen or other places with lampblack.
- Where the product is exposed to direct sunlight, or any other place where the product will produce high temperature.



Volume

Don't play music long and loud. Pay special attention when using headphones. Excessive volume can damage your hearing.



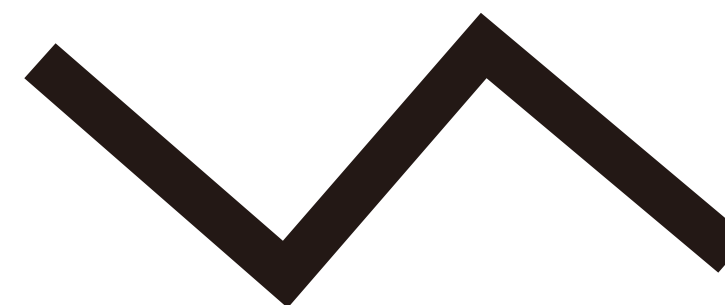
Heavy

Do not place heavy objects on this product. Otherwise, the top of the product will be overweight, causing the product to overturn or drop objects on it, which will lead to the risk of injury.



Correct assembly of scaffolds

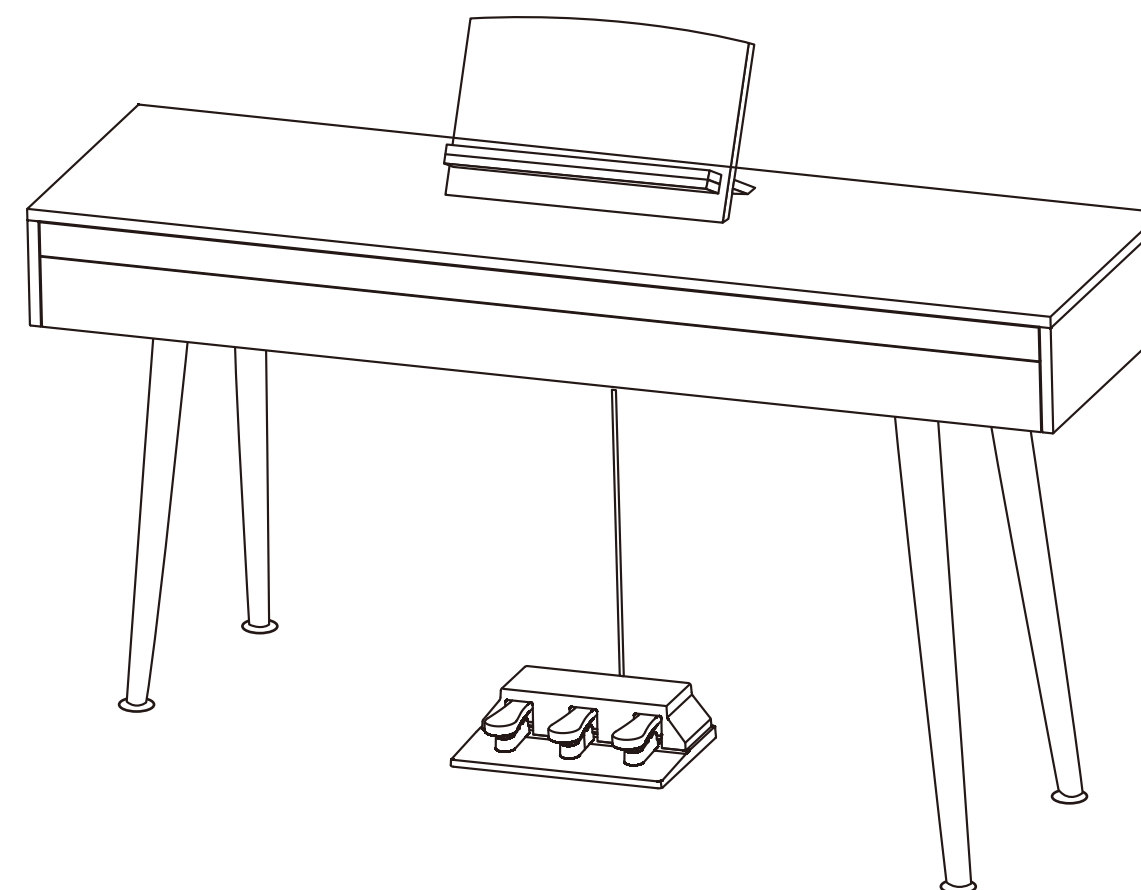
The incorrect assembly of the bracket may overturn, causing the product to fall off and posing a risk of injury to personnel. Therefore, it must be assembled according to the instructions in the attached installation guide to ensure that the product is properly mounted on its bracket.



TOP SOUND

DIGITAL PIANO

USER MANUAL





FUNCTION INTRODUCTION

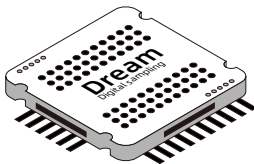
Thank you for choosing our digital piano. This product is elegant and exquisite. It is the perfect presentation of contemporary new electronic technology and acoustics.

• In order to enable you to better use the functions of this desktop piano, please must read the contents of this user manual carefully.



FRENCH DREAM SOUND SOURCE

Its core adopts the new generation of French dream sound source and digital sampling to bring you a realistic auditory experience.



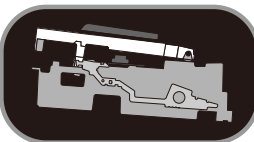
DUAL HEADPHONE JACKS

External dual headphone jacks can facilitate playing without affecting others.



88 PROGRESSIVE HEAVY HAMMER-ACTION KEYS

88 key progressive heavy hammer-action keyboard gives you a real touch like playing on a grand piano.



AUTOMATIC POWER-OFF FUNCTION

When the electric piano is turned on, it will automatically shut down after half an hour without operation.



INSTRUMENT PARAMETERS

Keys: 88 keys	Pitch: ≤ 3 cents
Register: A2 ~ C5	Output power: $4\Omega / 6W \times 2$
Style: Desktop Piano	Power supply parameters: AC 100~240V 50Hz



List of Attachments

Name	Quantity
Body	1 PCS
Power adapter	1 PCS
Music stand	1 PCS
Pedal	1 PCS
Iron frame stand	1 SETS(Including Left / Right)
Earphone adapter	1 PCS
Manual	1 PCS

REMARK!

• This product is an electronic musical instrument product. It is normal that there is a little current sound in the speaker or earphone after power-on.
Keep away from "radio, TV, antenna receiver, router, refrigerator, TV, motor and other RF electrical interference sources" during use.



SAFETY PRECAUTIONS



WARNING

Smoke, odor, overheating

When the product smokes, smells or overheats, there is a danger of fire and electric shock when it is used continually. In case of the above situation, the following operations should be performed immediately:

1. Turn off the power supply.
2. Pull the plug out of the power outlet.
3. Contact your dealer.

Power cord

1. The improper use of power cord may cause fire and electric shock. The following precautions must be observed:

- The special power cord designated for this product must be used.
- The AC power supply with output voltage within the rated voltage range for household use must be used.
- Do not overload power sockets and extension lines.

2. The improper treatment of power line will lead to its damage or breakage, which will cause fire and electric shock hazards. The following precautions must be observed:

- Do not place or heat heavy objects on power lines.
- Do not attempt to alter or bend the power cord too much.
- Do not twist or pull the power cord.
- If the power cord or plug is damaged, please replace the same type of power cord.

3. Do not touch the power cord and plug with wet hands, otherwise there is a danger of electric shock.

4. Please use the power cord where the water will not splash. Water is in danger of causing fire and electric shock.

5. Never place vases or any other container containing water on this product. Water is dangerous of causing fire and electric shock.

6. Do not allow minors to unplug and touch power lines or connection boards. Minors have no common sense of electricity safety, which may cause electric shock.



BE CAREFUL

The improper use of power cord may cause fire and electric shock. The following precautions must be observed:

- Never put the power cord near the oven or other heat source.
- Do not pull the cable when pulling out of the power socket. The main body of the plug must be grasped.
- The power cord plug must be inserted in the socket to the end.
- Make sure the power supply is off before connecting or disconnecting it.
- When thunderstorms occur or before traveling or other long-term departure, disconnect the power cord from the wall outlet.
- At least once a year, remove the power cord from the wall outlet and clean the dust accumulated around the plug.

Do not burn this product

Do not put this product in the fire, otherwise it will lead to product combustion and explosion of internal electronic components, which will cause fire and personnel injury.

Water and foreign bodies

Water, other liquids and (metal sheets, etc.) entering this product are in danger of causing fire and electric shock. In case of the above situation, the following operations shall be performed immediately:

1. Turn off the power supply.
2. If you are using a power cord for power supply, unplug it from the wall outlet.
3. Contact your distributor.

Disassembly and transformation

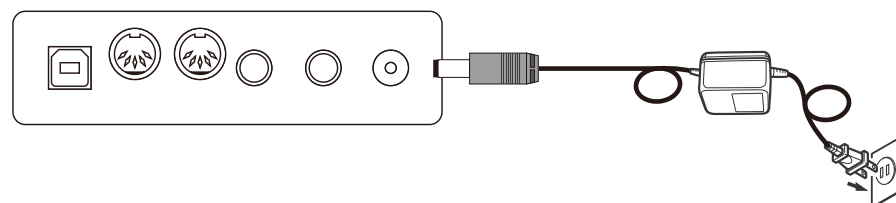
Do not disassemble or transform the product in any way, otherwise there is a risk of electric shock, scald or other personal injury. All internal inspection, adjustment and maintenance operations should be entrusted to your distributor.



SAFETY PRECAUTIONS

POWER SUPPLY

This product can be powered by standard indoor wall socket. Please only use the power cord equipped with this product. Be sure to turn off the power when not in use temporarily. When not in use for a long time, please unplug the power cord and keep it properly.



SIGN

To ensure that you use this product safely and correctly, to prevent harm to users and others and financial damage, this manual and products are marked with a series of safety signs. The various signs and their meanings are as follows:

⚠ WARNING

This sign indicates that there is a potential risk of death or serious injury if this mark is ignored and the product is mishandled.

⚠ BE CAREFUL

This sign indicates that there is a potential danger of injury to personnel or other financial damage if this sign is ignored and the product is operated incorrectly.

EXAMPLE OF LOGO



This triangle sign (\triangle) indicates what users should pay attention to. (The left example is careful shocks)



A circular sign (\odot) with an oblique line indicates prohibitions. The icons in or beside the logo indicate the contents specifically prohibited. (The example on the left is no disassembly)



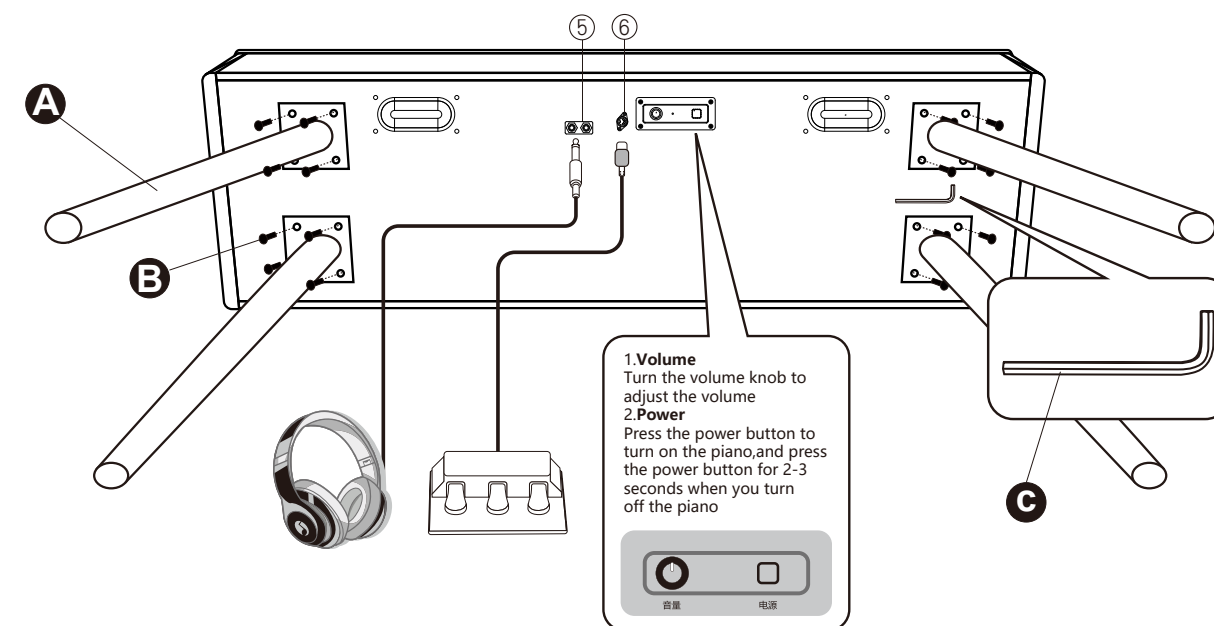
The round black bottom sign (\bullet) indicates what must be observed. The diagrams in this sign indicate the contents of the specific matters that must be observed. (The example on the left is that the power plug must be pulled out of the socket)



INSTALLATION DIAGRAM

REMARK!

- This product needs to be installed by adults. Do not let minors install it independently!

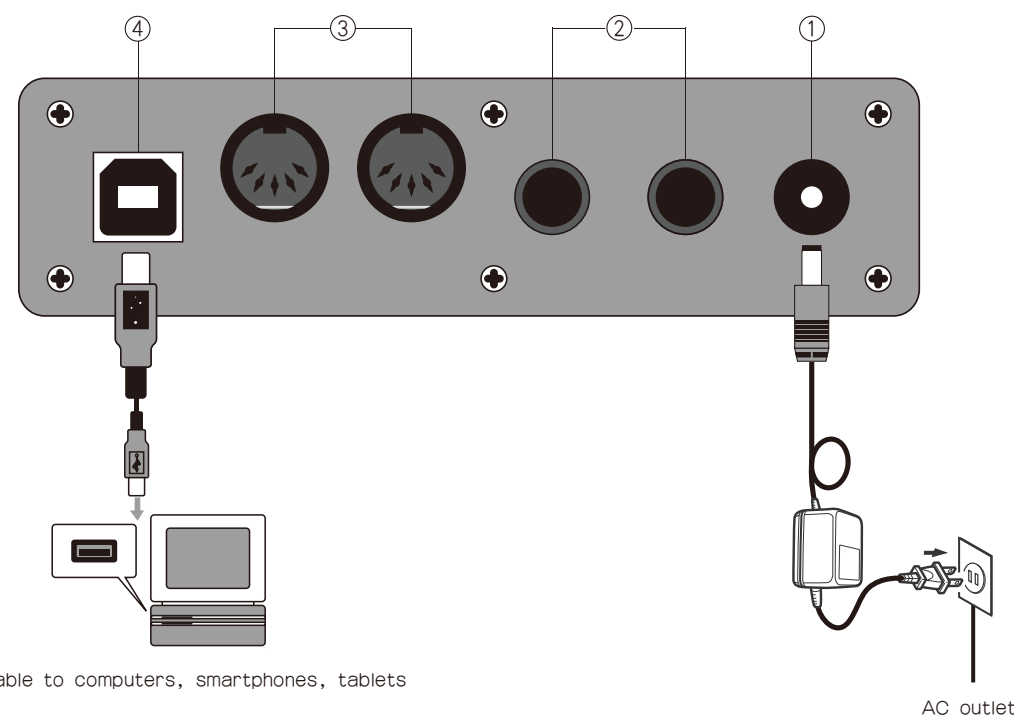


A Iron Feet (4 PCS)

B Screw M6*15 (16 PCS)

C Hexagon wrench(1 PC)

SOCKET DIAGRAM



1 POWER INPUT JACK

1. When used according to the access power line, one end is inserted into the socket at the bottom of the piano operation plate. The other end is inserted into the 100V-240V household power socket (Figure 1)
2. If you do not use this product for a long time, unplug the power cord and keep it properly.

2 AUDIO INPUT / OUTPUT JACK

1. The audio output socket can be connected to large sound equipment. (Figure 2)
2. The audio input socket connects the external sound source to the digital piano for playback. (Figure 2)

3 MIDI INPUT AND OUTPUT SOCKET

The MIDI interface of this digital piano can be connected to music equipment with MIDI. (Figure 3)

4 USB TRANSMISSION INTERFACE

Use the USB transmission interface of the digital piano to connect with the computer. Learn or play the keyboard through the pre-installed music software on the computer to perform, compose, store and other functions. The edited music and the built-in accompaniment of the music software can be connected to the digital piano for playing through the software, or played according to the accompaniment music.

5 DOUBLE HEADSET SOCKETS

Connecting the headset will automatically cut off the output of the built-in loudspeaker, so it won't disturb others when playing. This product has two headphone sockets, which can insert two headphones at the same time. (Figure 5)

6 3-PEDAL SOCKET

Insert the end of the pedal socket into the circular socket of the bottom of the piano, and you can connect the 3-pedal sound effects. In turn: soft, sostenuto, sustain (Figure 6)

PRODUCT MAINTENANCE

Careful maintenance and protection of this product plays an important role in prolonging the service life of the product and reducing the failure.

1 AVOID HEATING, DAMPNES OR DIRECT SUNLIGHT

Do not over expose the product to direct sunlight, or place it near air conditioning or extremely hot place.

2 DO NOT USE NEAR THE TV OR RADIO

This product may cause video or audio interference to the reception of TV and radio. If this happens, the product should be removed from the TV or radio.

3 NO DILUENTS OR SIMILAR CHEMICALS SHOULD BE USED FOR CLEANING

Clean the product with a soft cloth wetted with weak water solution and neutral detergent. Soak the cloth in a solution and wring it dry until it approaches drying.

4 DO NOT SHAKE, AVOID COLLISION

When moving, the product should be handled carefully and lightly. Violent vibration and collision are strictly prohibited in order to avoid damage to the shell or internal electronic components.